

FS3000LED



Light Efficiency:

3 Lumen/Watt

Light Quality:

CRI: 94.7

Color Temperature:

6310 K

Output: 1142 lm

Peak: 200120 cd

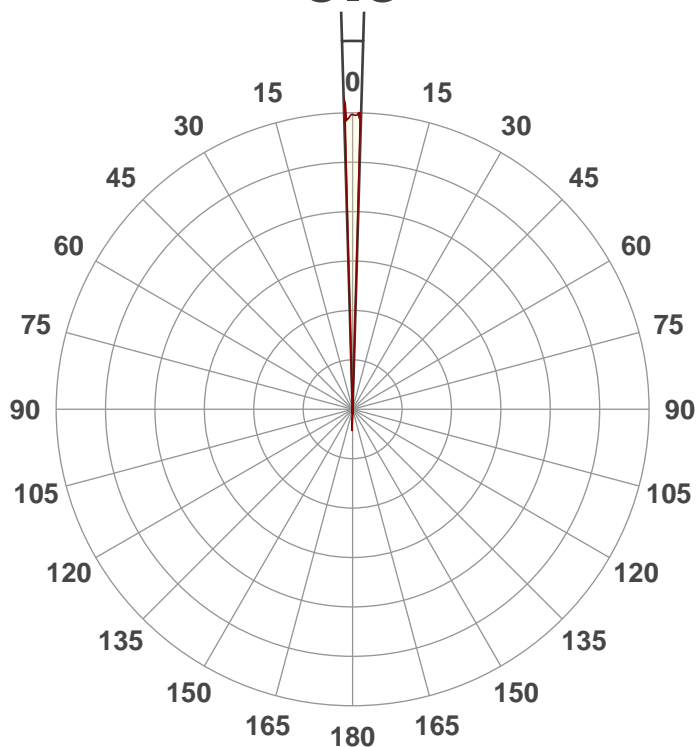
Power: 349.5 W

PF: 1.0



Beam Angle

3.3°



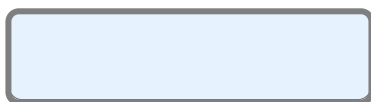
Test:

Zoom In

Date:

6/24/2020

Note:



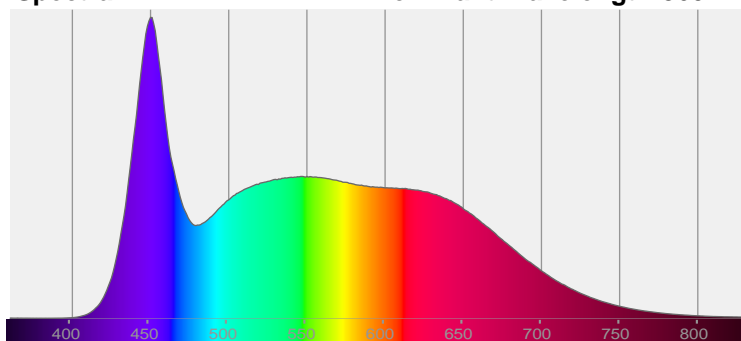
CIE 1931

x: 0.318

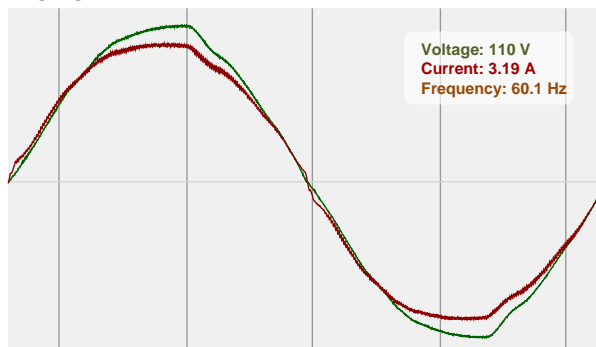
y: 0.316

Spectra

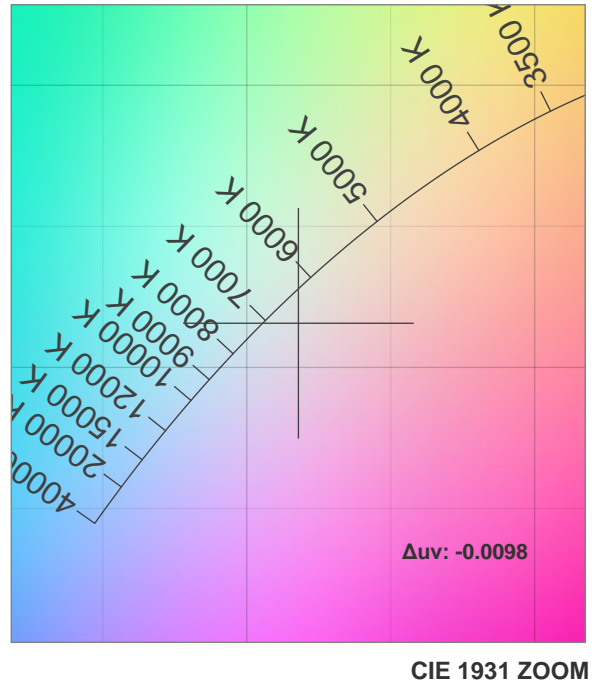
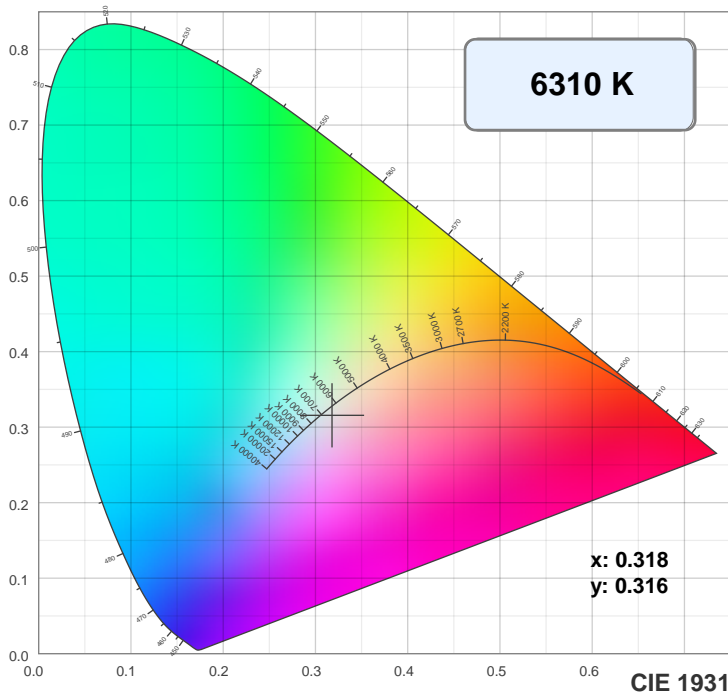
Dominant Wavelength: 360nm



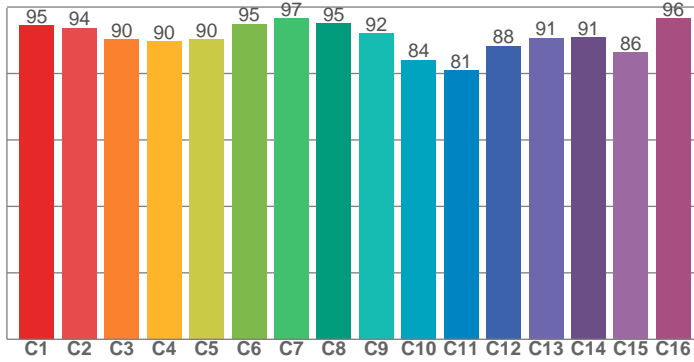
Power



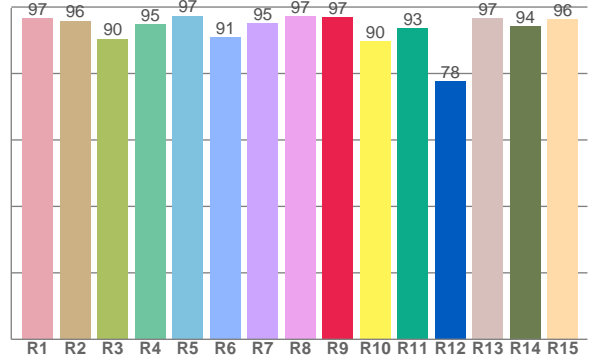
Color Details



TM30: 90.8



CRI: 94.7 (R1-R8)



CRI R values, only R1-R8 are used to calculate final CRI value

R1	R2	R3	R4	R5	R6	R7	R8	R9	R10	R11	R12	R13	R14	R15
96.5	95.9	90.5	94.7	97.3	90.8	95.0	97.1	97.0	89.6	93.5	77.6	96.7	94.2	96.4

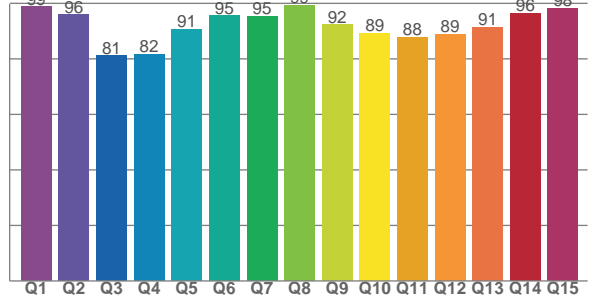
TM30 C values, 16 binned values out of total of 99 C values

C1	C2	C3	C4	C5	C6	C7	C8	C9	C10	C11	C12	C13	C14	C15	C16
94.5	93.7	90.2	89.7	90.3	95.0	96.6	95.0	92.1	84.1	80.9	88.2	90.7	90.9	86.3	96.5

CQS Q values

Q1	Q2	Q3	Q4	Q5	Q6	Q7	Q8	Q9	Q10	Q11	Q12	Q13	Q14	Q15
98.7	95.9	81.2	81.6	90.7	95.5	95.4	99.3	92.4	89.2	87.8	88.8	91.4	96.4	98.2

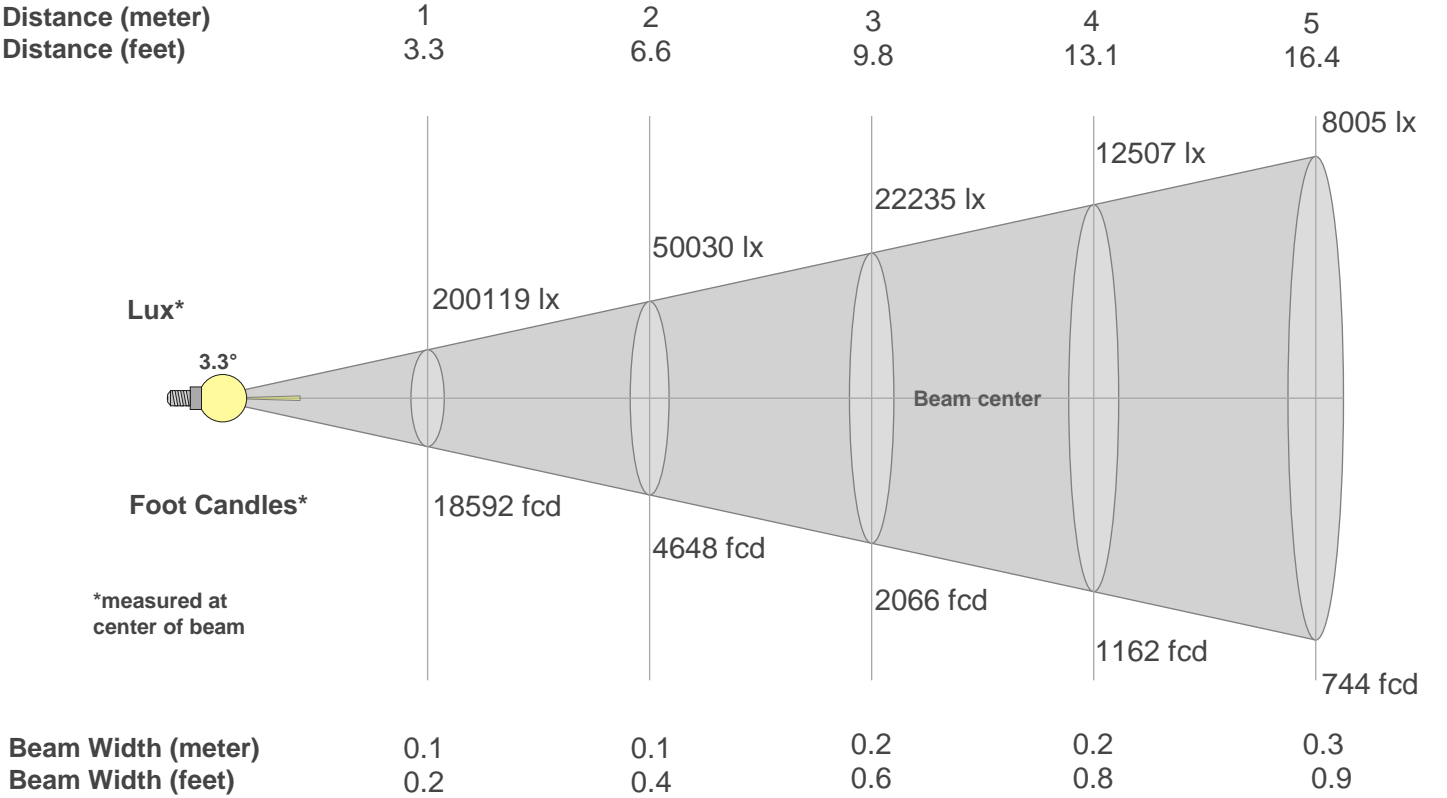
CQS: 90.4



Color Parameters

Color Temperature	Color Rendering Index	Red Component	Color Fidelity	Color Gamut	Color Quality Scale	Color Coordinate CIE 1931	Color Coordinate CIE 1931	Color Coordinate	Color Coordinate	Color Deviation from Black Body
CCT	CRI	CRI R9	TM30 Rf	TM30 Rg	CQS	x	y	u	v	Δuv
6310 K	94.7	97.0	90.8	103.3	90.4	0.318	0.316	0.207	0.308	-0.0098

Beam Details



Beam Intensities from 1-20m																				
m	1	2	3	4	5	6	7	8	9	10	11	12	13	14	15	16	17	18	19	20
ft	3.3	6.6	9.8	13.1	16.4	19.7	23	26.2	29.5	32.8	36.1	39.4	42.7	45.9	49.2	52.5	55.8	59.1	62.3	65.6
lx	200119	50030	22235	12507	8005	5559	4084	3127	2471	2001	1654	1390	1184	1021	889	782	692	618	554	500
fcd	18591.7	4647.9	2065.7	1162	743.7	516.4	379.4	290.5	229.5	185.9	153.7	129.1	110	94.9	82.6	72.6	64.3	57.4	51.5	46.5

Intensities in 0° C-plane																				
0°	1°	2°	3°	4°	5°	6°	7°	8°	9°	10°	11°	12°	13°	14°	15°	16°	17°	18°	19°	
200K	197K	7K	0K	0K	0K	0K	0K	0K	0K	0K	0K	0K	0K	0K	0K	0K	0K	0K	0K	0K
100%	98%	4%	0%	0%	0%	0%	0%	0%	0%	0%	0%	0%	0%	0%	0%	0%	0%	0%	0%	0%

Intensities in 90° C-plane																				
0°	1°	2°	3°	4°	5°	6°	7°	8°	9°	10°	11°	12°	13°	14°	15°	16°	17°	18°	19°	
200K	197K	7K	0K	0K	0K	0K	0K	0K	0K	0K	0K	0K	0K	0K	0K	0K	0K	0K	0K	0K
100%	98%	4%	0%	0%	0%	0%	0%	0%	0%	0%	0%	0%	0%	0%	0%	0%	0%	0%	0%	0%

Intensities in 180° C-plane																				
0°	1°	2°	3°	4°	5°	6°	7°	8°	9°	10°	11°	12°	13°	14°	15°	16°	17°	18°	19°	
200K	200K	0K	0K	0K	0K	0K	0K	0K	0K	0K	0K	0K	0K	0K	0K	0K	0K	0K	0K	0K
100%	100%	0%	0%	0%	0%	0%	0%	0%	0%	0%	0%	0%	0%	0%	0%	0%	0%	0%	0%	0%

Intensities in 270° C-plane																				
0°	1°	2°	3°	4°	5°	6°	7°	8°	9°	10°	11°	12°	13°	14°	15°	16°	17°	18°	19°	
200K	200K	0K	0K	0K	0K	0K	0K	0K	0K	0K	0K	0K	0K	0K	0K	0K	0K	0K	0K	0K
100%	100%	0%	0%	0%	0%	0%	0%	0%	0%	0%	0%	0%	0%	0%	0%	0%	0%	0%	0%	0%

Beam Angle 50%	Field Angle 10%	Cutoff Angle 2,5%	Intensity Ratio in 120° Cone	Intensity Ratio in 90° Cone
3.3°	3.6°	3.8°	59.9%	53.9%